

## 使用环境条件:

Environmental Requirement

环境温度:  $-40^{\circ}\text{C} \sim +125^{\circ}\text{C}$

相对湿度: 温度 $+40^{\circ}\text{C}$ , 为92%~98%

大气压力: 101.33KPa~6.67KPa

正弦振动: 10~2500Hz, 加速度 $196\text{m/s}^2$

冲击: 加速度 $980\text{m/s}^2$

碰撞: 加速度 $392\text{m/s}^2$

恒加速度: 加速度 $245\text{m/s}^2$

Environmental Temperature:  $-40^{\circ}\text{C} \sim +125^{\circ}\text{C}$

Relative Humidity: 92%~98%, at  $+40^{\circ}\text{C}$

Atmospheric Pressure: 101.33KPa~6.67 KPa

Vibration: 10~2500Hz,  $196\text{m/s}^2$

Shock:  $392\text{m/s}^2$

Constant Acceleration Vibration:  $245\text{m/s}^2$

## 型号标志示例:

Type Designation:

主称代号 Identification Code

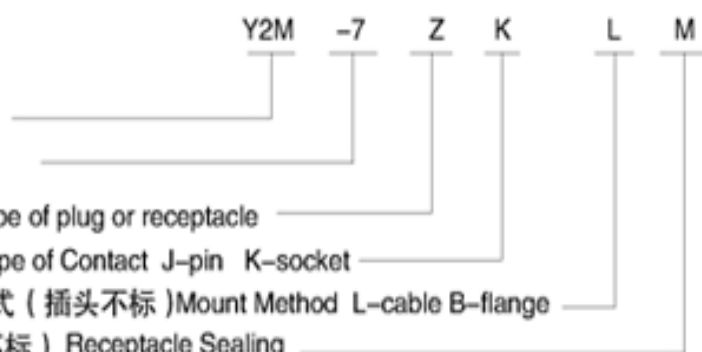
接触件数目 Number of Contacts

插头或插座: T-插头, Z-插座 Type of plug or receptacle

接触件种类: J-插针, K-插孔 Type of Contact J-pin K-socket

安装方式: L-电缆式, B-法兰盘式(插头不标) Mount Method L-cable B-flange

密封式插座(插头、非密封插座不标) Receptacle Sealing



## 主要技术特性(正常条件下):

Technical Features(Under Normal Condition)

额定电流: Rated Current

接触对直径 Contact diameter	Ø1	Ø1.5	Ø2.5
额定电流 Rated Current	5A	10A	25A

接触电阻: Contact Resistance

接触对直径 Contact diameter	Ø1	Ø1.5	Ø2.5
接触电阻 Contact Resistance	$< 5\text{m}\Omega$	$< 3\text{m}\Omega$	$< 1\text{m}\Omega$

耐压 Dielectric withstand Voltage:

接触对数量 Number of contact	耐电压 Dielectric withstand Voltage
2, 3, 4, 5, 7, 10, 14, 19, 24, 36, 50	1500V
32, 37, 65, 81, 120	1000V

绝缘电阻 Insulation Resistance:  $\geq 1000\text{M}\Omega$

额定电压 Rated Voltage: 400V

寿命 Mechanical Operation: 500次

密封性(仅密封式插座) Tightness: 0.3MPa

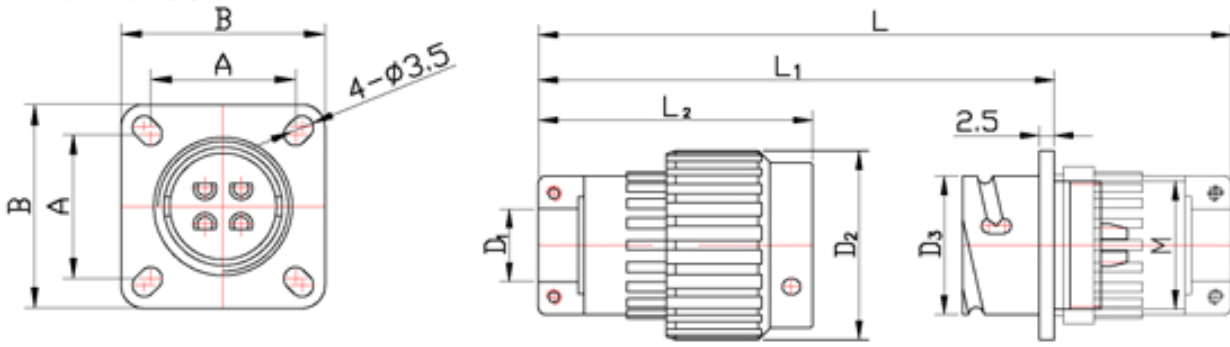
大豪电子

电话: 0755-83233025

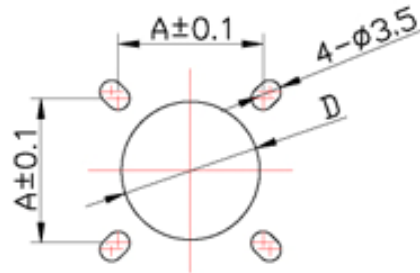
<http://www.szdahao.com>

<http://www.very-tec.com>

**外形示意图: Outer Dimensions**



**安装开口尺寸: Mounting Dimensions**



规格 Specification	线数 No. of contacts	安装尺寸 Mounting Dimensions				外形尺寸 Outer Dimensions					
		A	D	M 左	D	B	D <sub>2</sub>	D <sub>3</sub>	L	L <sub>1</sub>	L <sub>2</sub>
21	Y2M-2	22 ~ 24	Ø12	M21 × 0.75	Ø21.5	31	Ø31	Ø22.7	79	51	5
	Y2M-3										
	Y2MA-3										
	Y2M-4										
	Y2M-5										
	Y2M-7										
	Y2M-10										
	Y2M-14										
28	Y2MA-10	28	Ø18	M28 × 1	Ø28.5	38	Ø38	Ø28.7	88	56	49
	Y2M-19										
	Y2M-24										
	Y2M-32										
	Y2M-37										
36	Y2M-36	36	Ø26	M36 × 1	Ø36.5	46	Ø46	Ø36.7	108	67	60
	Y2M-50										
	Y2M-65										
51	Y2M-81	51	Ø40	M50 × 1	Ø50.5	60	Ø60	Ø51.2	126	77	71
	Y2M-120										

## 接触件数目及排列: Contact arrangement

—  $\varnothing 1$ 接触对     $\varnothing 1.5$ 接触对     $\varnothing 2.5$ 接触对



Y2M-2



Y2M-3



Y2MA-3



Y2M-4



Y2M-5



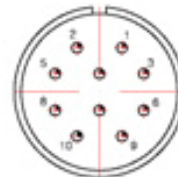
Y2M-7



Y2M-10



Y2M-14



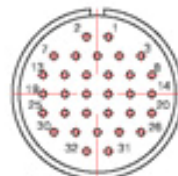
Y2MA-10



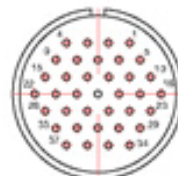
Y2M-19



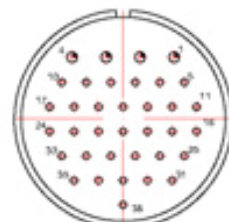
Y2M-24



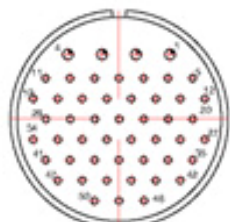
Y2M-32



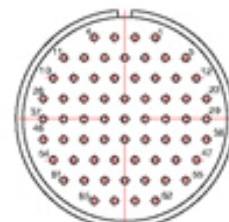
Y2M-37



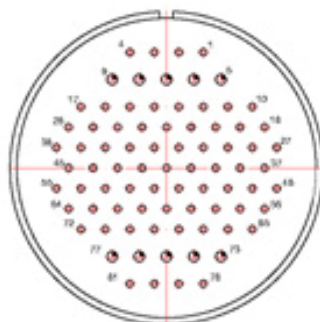
Y2M-36



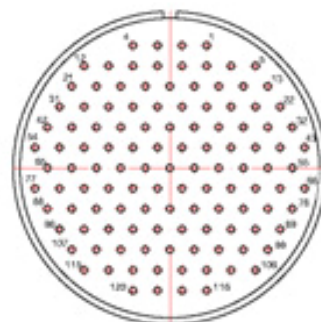
Y2M-50



Y2M-65



Y2M-81



Y2M-120